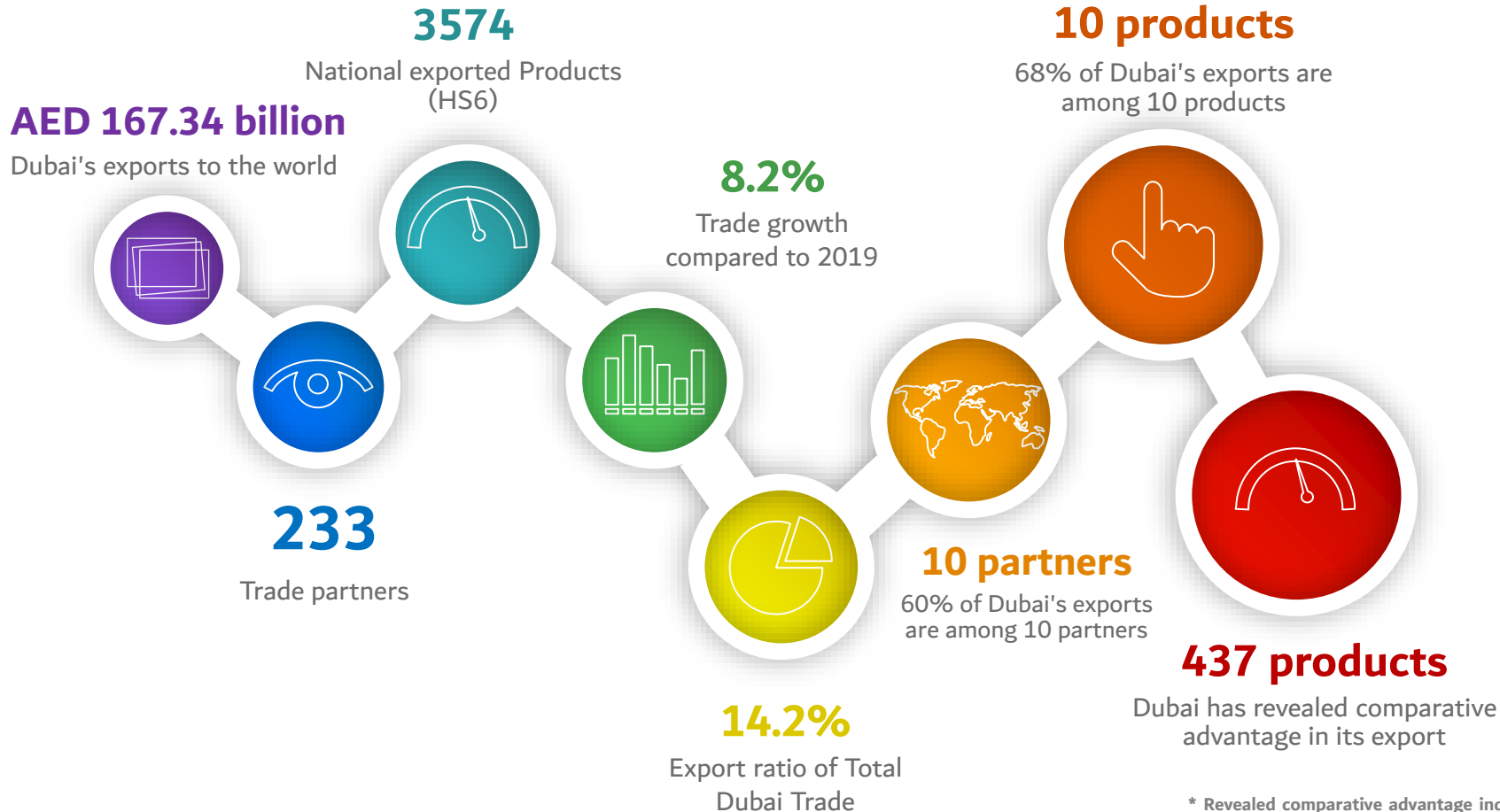


# Dubai Exports in Figures - 2020



## Dubai in revealed Comparative Advantage Index

Dubai has revealed comparative advantage in exporting 437 products (customs items) representing about 12.2% of the total exported products in 2020. These products account for nearly 91% of Dubai's total export value in 2020.

## Top products with revealed comparative advantage of Dubai 2020 exports



\* Revealed comparative advantage index: ratio of the value of product exports to the total value of state exports to the proportion of this product in world trade. The value of less than 1 means that there is no comparative advantage. This means that the volume of exports of this product is higher than the global average, which increases the comparative advantage in the export of this product.